



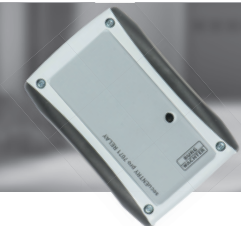
secu**ENTRY**
 Electronic Door Lock
 secuENTRY pro 7071 RELAY

en Download: www.burg.biz
 fr Download: www.burg.biz
 nl Download: www.burg.biz
 it Download: www.burg.biz
 es Descarga: www.burg.biz
 pt Download: www.burg.biz

se Download: www.burg.biz
 no Download: www.burg.biz
 dk Download: www.burg.biz
 fi Ladattava tiedosto: www.burg.biz
 el λήψη: www.burg.biz
 tr İndir: www.burg.biz

ro Descărcare: www.burg.biz
 pl Pobieranie pliku: www.burg.biz
 cz Stáhnout: www.burg.biz
 hu Letölthető: www.burg.biz
 sl Download: www.burg.biz
 sk Download: www.burg.biz

hr Download: www.burg.biz
 ru загрузка: www.burg.biz
 bg Download (зареди): www.burg.biz
 et Download: www.burg.biz
 BW_Relay_BA_sE_012111
 kfs 06/2016



Instructions for use

With the **secuENTRY pro 7071 RELAY** you have the chance to control electric devices. In order for this to work, the controlling device needs to be connected with the **secuENTRY pro 7071 RELAY**. The **secuENTRY pro 7071 RELAY** can be operated via the keypads secuENTRY Keypad PIN and secuENTRY Keypad FS or with the respective App for your Smartphone*.
 For the needed energisation, you need a separate mains adapter with a voltage range between 6V and 12V direct current voltage.
Attention! The mains adapter is not included within the delivery scope.

Following connectors are available:

- + 6V - +12V
- -GND
- COM
- NC breaker (max. 24V, 2A)
- NO maker (max. 24V, 2A)

Important: Assembly and installation can only be performed by a technician or another specialist.

With damage due to wrong installation the warranty claim expires. Please read the instruction manual carefully before installation and commissioning your device/devices and store it away safely.

The **secuENTRY pro 7071 RELAY** is not prepared for the assembly in an outside area. We therefore advise an installation in a weather protected area in order to guarantee a safe usage.

A voltage of 230V must not be switched over the relay! (max. 24V)
 The mains adapter is plugged via the +/- connectors.
 Between COM and NC lies the potential-free breaker resp. between COM and NO the potential-free maker.
 Maximum switching time: 17 hrs. 59 min. 59. Sec.

* Please check at: www.burg.biz/secuentry/description if your smartphone is compatible with the App.

Radio range

The radio range in free field is up to 4 meters. The range depends on the surrounding and therefore can vary strongly.
 Before screwing/sticking on the **secuENTRY pro 7071 RELAY** device, please perform a test to make sure that radio reception for the **secuENTRY pro 7071 RELAY** is guaranteed at the chosen location.
 If the **secuENTRY pro 7071 RELAY** does not have radio reception (the device does not switch), choose another 10 cm shifted location and try again.

This process has to be repeated until radio contact exists. You can fix the secuENTRY pro 7071 RELAY with either the adhesive-pad or with screws (exclusive).

Screw positions are above the circuit board. Tuck firm the cables at the given clamping position (clamping inscription is inside the cover) and initiate electric supply. Afterwards, screw on the cover to the baseplate.

Administratorcode / QR-Code

Enclosed with every **secuENTRY pro 7071 RELAY** there is a QR-code including an administrator-code. This QR-Code is required for setting up the switching possibilities via the BURG-WÄCHTER KeyApp as well as for logging in and introducing the keypad or the secuENTRY software.

Important: Before you assemble the secuENTRY pro 7071 RELAY, you should change the existing administrator-code (factory setting: 123456) via the PC software or the keypad.

Attention! With a loss of the administrator- and/or the QR code the reprogramming resp. the use of all administrator functions is not possible anymore. Please store away safely!

Tip: The QR-code can also be scanned in electronic form as a file or saved as a photo onto a protected data carrier.

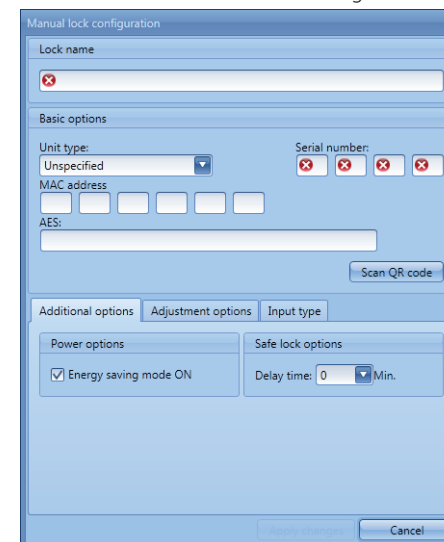
Commissioning

The **secuENTRY pro 7071 RELAY** functions as an evaluation unit that is integrated into your locking environment via the PC software or a secuENTRY keypad. Additionally, access-authorized resp. switching-entitled users, as well as active periods of the **secuENTRY pro 7071 RELAY** over the switch clock, can be set up.

This instruction manual demonstrates only the procedure for incorporating the **secuENTRY pro 7071 RELAY**, learn more details from the instructions for the PC software resp. the secuENTRY keypads.

Instructing the secuENTRY pro 7071 RELAY via the software

- Under lock management, add a new lock to the setting menu. The screen window for lock configuration appears.



III.1: Manual lock configuration

- **Lock name**
 Assign a freely chosen lock name. This lock name will reappear in the lock allocation.
- **Standard options**
 Enclosed to every **secuENTRY pro 7071 RELAY** is a QR code that includes all necessary information. The most easy and convenient way for initiation is to scan this QR code. Proceed as follows:
 - Connect a webcam and click "scan QR code"
 - Hold the code in a way the cam can capture it
 Please note that the QR code of the Cylinder includes the following information: (SN, MAC, AES and ADM)



secuENTRY ^{pro}

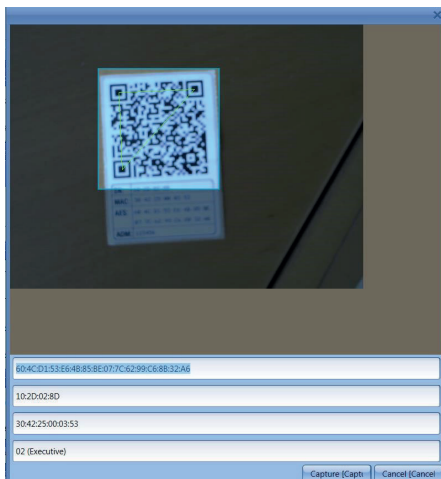
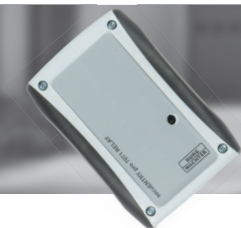
Electronic Door Lock
secuENTRY pro 7071 RELAY

en Download: www.burg.biz
fr Download: www.burg.biz
nl Download: www.burg.biz
it Download: www.burg.biz
es Descarga: www.burg.biz
pt Download: www.burg.biz

se Download: www.burg.biz
no Download: www.burg.biz
dk Download: www.burg.biz
fi Ladattava tiedosto: www.burg.biz
el λήψη: www.burg.biz
tr İndir: www.burg.biz

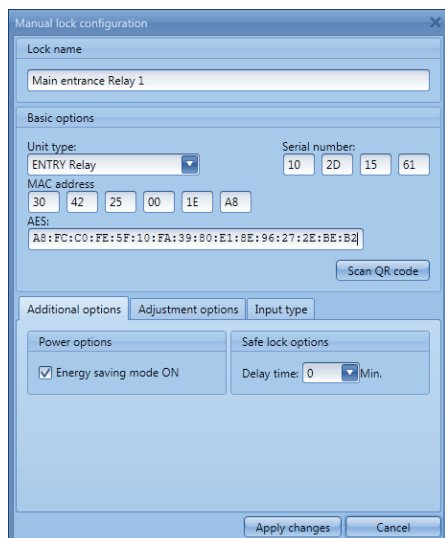
ro Descărcare: www.burg.biz
pl Pobieranie pliku: www.burg.biz
cz Stáhnout: www.burg.biz
hu Letölthető: www.burg.biz
sl Download: www.burg.biz
sk Download: www.burg.biz

hr Download: www.burg.biz
ru загрузка: www.burg.biz
bg Download (зареди): www.burg.biz
et Download: www.burg.biz
BW_Relay_BA_sE_012111
kfs 06/2016



III.2: QR code scan

• Click **Capture** so that the data can be accepted and transferred into the system.



III.3: Lock configuration

• Evaluation type

- Choose ENTRY Relay (STE)
- Choose save changes.

→ With this you've introduced the cylinder to the software.

• Setting options

Here you can allocate a timer and switching times for the **secuENTRY pro 7071 RELAY**. Additionally, you can activate a random function that switches the **secuENTRY pro 7071 RELAY** in random intervals.

Instructing the secuENTRY pro 7071 RELAY via a keypad

- Turn on keypad via the -button
- To change the language, please click on **FUNC**, scroll down with 2 until you get to "Menü - Sprache/Language" and enter with
- again scroll up or down with 1 or 2 and confirm your language with
- Click **FUNC** to get to the menu "Code change"
- Via the buttons 1 or 2 you can scroll up or down until you get to the "Menu Administrator"
- Confirm with
- Via the buttons 1 or 2 you can scroll up or down until you get to the "Admin. setup – Create user"
- Confirm with
- Enter the admin code of the secuENTRY pro 7071 RELAY
- After successful registration, the software will confirm that the data has been saved.

Attention! Make sure that no other powered secuENTRY-unit is placed in proximity since it may be responded to erroneously. In doubt, please power off these units (remove batteries).

Switching possibilities

Switching with pin code

- Turn on keypad via the -button
- Enter the 6-digit code (factory set „1-2-3-4-5-6“). "Please turn the knob!" appears on the display.
- The **secuENTRY pro 7071 RELAY** switches according to the settings.

Switching with fingerprint

- Click on the -button of the keypad
- Move the adjusted finger centrally from top to bottom over the sensor. "Please turn the knob!" appears on the display.
- The **secuENTRY pro 7071 RELAY** switches according to the settings.

Switching with the BURG-WÄCHTER KeyApp

- Hold your smartphone in front of the **secuENTRY pro 7071 RELAY** and click on the opening button of the KeyApp.
- The **secuENTRY pro 7071 RELAY** switches according to the settings.

Warranty

To provide you with a qualitative impeccable and valuable product and to optimally help you in the case of service or repair, it is necessary that flawed or defective devices are handed back to your retailer together with the QR code/s and the original proof of purchase.

With returning according to your cancellation right, all components need to be in factory setting. In the case of a disregard, warranty expires.

Disposal of your device

Dear customer,

please help to avoid waste. If you consider to dispose of this device, please note that many components of it consist of valuable materials that can be recycled.



We point to the fact that electric and electronic devices as well as batteries are not to be disposed in the household rubbish but need to be collected separately. Please inform yourself at your local competent authority about respective collecting points for batteries and electric waste.



For questions about the EG declaration of conformity please contact info@burg.biz.

Printing and typographical errors as well as technical alterations reserved.