

secuENTRY pro 7071 Relay

Order no.: 57180

Technical details.

Power supply	Power supply unit ¹ 6-12V direct current 500 mAh
Installation conditions	Install in a weatherproof and manipulation-protected area
Compatibility	Operation with pincode and fingerprint
Frequency range	Up to 4m (AES encryption)
Connections	<ul style="list-style-type: none">• 6V to 12V DC 500 mAh• GND• COM• NC potential-free opener contact (max. 24V, 1A)• NO potential-free make contact (max. 24V, 1A)
Coupling duration	1 sec. up to 17:59:59 hrs.
Data transfer	Bluetooth 4.0 LE (AES encrypted)
Important!	No voltage of 230V must be switched through the relay! (max. 24V)

¹Power supply unit not included in scope of delivery.

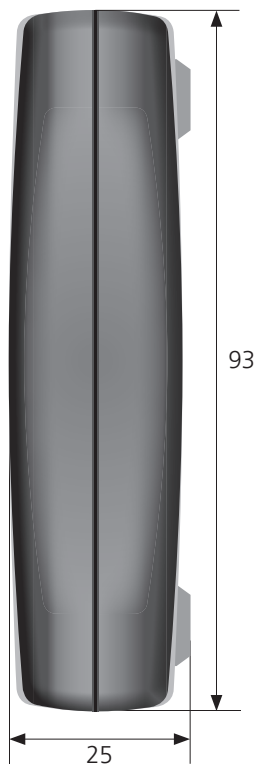
Areas of use.

Electrical control unit to switch on external electrical devices
(E-openers, garages, roller doors, cupboards, etc.)

secuENTRY pro 7071 Relay.



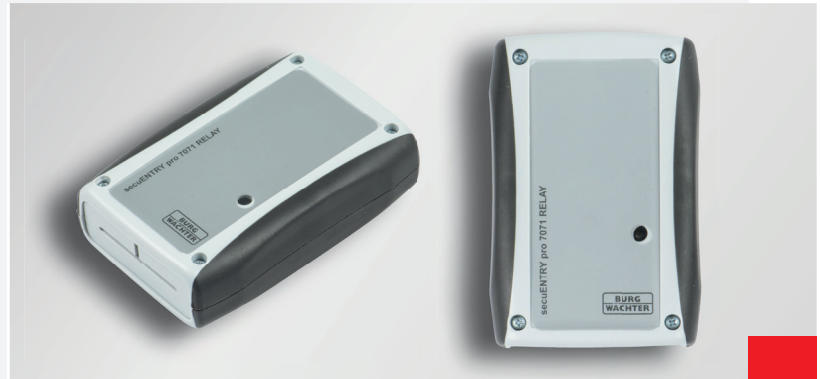
Front view



Side view

Dimensions in mm | Fig. 1:1

Product illustration.



Product information.

User data:

- Electronic controller unit for up to 2000 users
- Identification media:
 - Pincode: 2000 users
 - Fingerprint: 200-300 users, including 45 premium fingers
 - Smart devices: 2000 users
- History functions: 2000 events

Function via optional software:

- User or group administration
- Time and calendar function
- Assignment of authorisations
- History function:
- Hotel mode
- Relay timer

Scope of delivery:

- secuENTRY pro 7071 Relay
- Serial number/factory admin code
- QR code for training regarding the products
- Operating instructions